



P.P.N.(P.G.)College,Kanpur

96/12, Mahatma Gandhi Marg, Kanpur-208001


•Telefax:(0512)2361924•Website:www.ppncollege.org•


• e-mail:ppncollegekanpur@gmail.com•


K.I. 7.1.2: The Institution has facilities and initiatives for :1. Alternate sources of energy and energy conservation measures ,2. Management of the various types of degradable and non-degradable waste, 3. Water conservation, 4. Green campus initiatives 5. Disabled-friendly, barrier free environment

Index

Sl.No.	Enclosures	Page No.
1.	Circular for Save Energy	C-1
2.	Circular for Water Conservation	C-2


(Prof. Suman Singh)
Convener
NAAC


(Prof. Abha Singh)
Convener
IQAC


(Prof. Anoop Kumar Singh)
Principal
PPN (PG) College, Kanpur



P.P.N. (P.G.) College, Kanpur

C-1

96/12 Mahatma Gandhi Marg, Kanpur -208001

•Telefax: (0512)2361924 • Website: www.ppncollege.org•

•email:ppncollegekanpur@gmail.com•

दिनांक 05.12.2022

सूचना

समस्त छात्र/छात्राओं को सूचित किया जाता है कि कक्षाओं में पठन-पाठन के उपरान्त कक्ष से निकलते समय कमरे में चलते हुए बिजली के उपकरणों को बन्द कर दें, जिससे बिजली के दुरुपयोग को रोका जा सकें।

आइये हम सब मिल कर ऊर्जा संरक्षण का संकल्प लें।

धन्यवाद।

(प्रो० निधि श्रीवास्तव)
संयोजिका,
पर्यावरण संरक्षण व
स्वच्छता समिति

(प्रो० अनूप कुमार सिंह)
प्राचार्य



P.P.N. (P.G.) College, Kanpur c-2

96/12 Mahatma Gandhi Marg, Kanpur -208001

•Telefax: (0512)2361924 • Website: www.ppncollege.org•

•email:ppncollegekanpur@gmail.com•

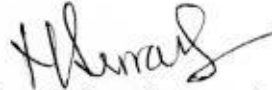
दिनांक 12.12.2022

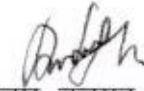
सूचना

"जल है तो कल है"

समस्त छात्र/छात्राओं को सूचित किया जाता है कि महाविद्यालयों के नलों से अनावश्यक बहते हुए जल को, उपयोग के बाद उसे तुरन्त बन्द कर दें, जिससे भविष्य हेतु जल का संरक्षण किया जा सके।

आइये हम सब मिल कर जल संरक्षण का संकल्प लें।
धन्यवाद।


(प्रो० निधि श्रीवास्तव)
संयोजिका,
पर्यावरण संरक्षण व
स्वच्छता समिति


(प्रो० अनूप कुमार सिंह)
प्राचार्य



P.P.N.(P.G.)College, Kanpur

96/12, Mahatma Gandhi Marg, Kanpur-208001


•Telefax:(0512)2361924•Website:www.ppncollege.org•


• e-mail:ppncollegekanpur@gmail.com•


K.I. 7.1.2: The Institution has facilities and initiatives for :1. Alternate sources of energy and energy conservation measures ,2. Management of the various types of degradable and non-degradable waste, 3. Water conservation, 4. Green campus initiatives 5. Disabled-friendly, barrier free environment

Index of Reports

Sl.No.	Enclosures	Page No.
1.	Alternate sources of energy and energy conservation measures	R1-R6
2.	Management of Various Types of Degradable and Non-degradable Waste	R7-R-11
3.	Water Conservation	R-12
4.	Green Campus Initiatives	R13-R21
5.	Disabled Friendly Environment	R22-25


(Prof. Suman Singh)
Convener
NAAC


(Prof. Abha Singh)
Convener
IQAC


(Prof. Anoop Kumar Singh)
Principal
PPN (PG) College, Kanpur



P.P.N. (P.G.) College, Kanpur ^{R-18}

96/12 Mahatma Gandhi Marg, Kanpur -208001

•Telefax: (0512)2361924 • Website: www.ppncollege.org •
•email: ppncollegekanpur@gmail.com •

Alternate sources of energy and energy conservation measures

Solar Panel:

The installation of solar panels in our campus is a critical step toward environmental consciousness and sustainability. By using solar energy to power multiple facilities, we can drastically lower our carbon footprint while also utilizing clean, renewable energy. This initiative not only reduces energy expenses but also acts as a shining example for encouraging environmentally responsible teaching methods. The capacity of solar panels to capture sunlight, an almost infinite resource, and transform it into electricity without producing harmful pollutants is what makes them so important. Because of this, our college is committed to a more sustainable and greener future and plays a significant part in reducing its influence on the environment.



Solar Panel installed on roof top

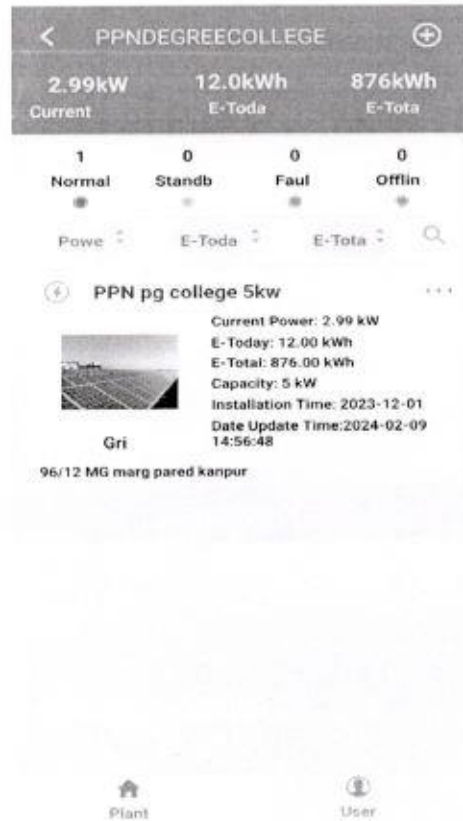
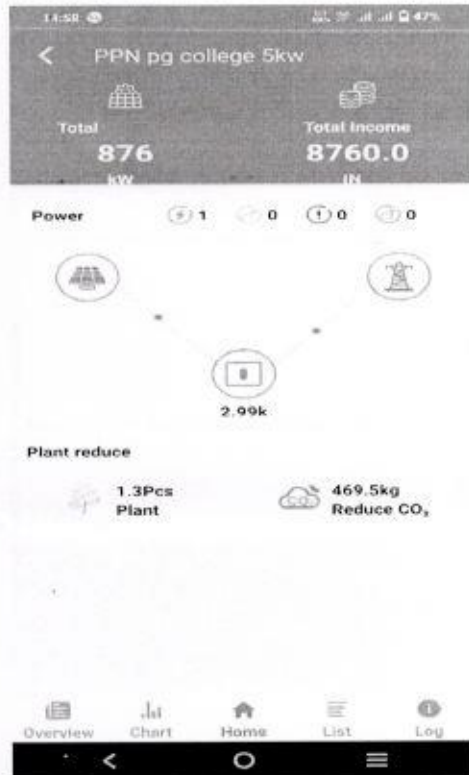


P.P.N. (P.G.) College, Kanpur

96/12 Mahatma Gandhi Marg, Kanpur -208001

•Telefax: (0512)2361924 • Website: www.ppncollege.org•
•email:ppncollegekanpur@gmail.com•

Presently, solar panels are efficiently in operation, harnessing sustainable energy. Their functionality can be witnessed through the accompanying picturesque illustration.



Solar Panel Readings



P.P.N. (P.G.) College, Kanpur

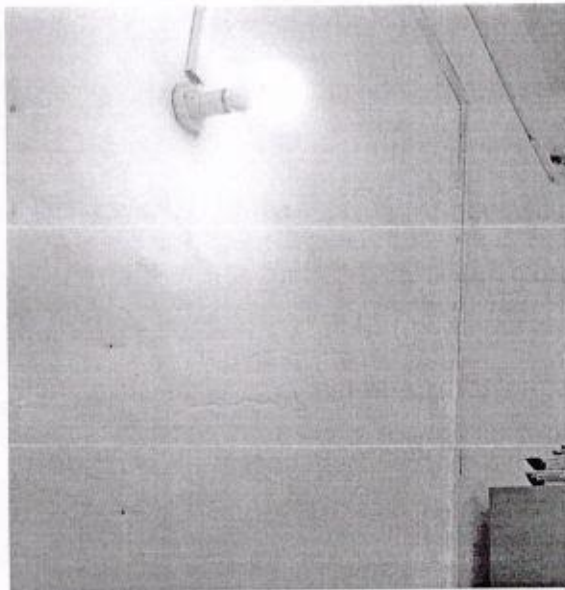
96/12 Mahatma Gandhi Marg, Kanpur - 208001

• Telefax: (0512)2361924 • Website: www.ppncollege.org •

• email: ppncollegekanpur@gmail.com •

LED Bulbs:

Our college campus has taken a forward step by installing LED bulbs everywhere, highlighting environmental responsibility and energy efficiency. By strategically switching to LED technology, energy consumption is drastically decreased, resulting in lower expenses and carbon emissions. Improved lighting quality helps the entire campus and makes the learning environment safer and more comfortable. Given that LED lighting sources have a longer lifespan and a lesser environmental effect than traditional lighting sources, the significance of this endeavor goes beyond economics to include environmental stewardship. Our college's dedication to sustainability not only conserves resources but also serves as a model for other educational institutions to follow when it comes to encouraging environmentally friendly practices.



LED Bulbs in departments



प० पृथी नाथ कालेज, कानपुर
Pt. Prithi Nath College, Kanpur

96/12, Mahatma Gandhi Marg, Kanpur

Tel/fax : 0512-2361924, Website-www.ppncollege.org/Email id : info@ppncollege.org, principal@ppncollege.org

Ref. No./पत्रांक सं०.....

Date/दिनांक 05/02/2022

सूचना

समस्त छात्र-छात्राओं को सूचित किया जाता है राष्ट्रीय ऊर्जा संरक्षण दिवस के अवसर पर "ऊर्जा संरक्षण: एक पहल" कार्यशाला का आयोजन दिनांक 14.12.2022 को पी०पी०एन० महाविद्यालय के सभागार में 12 बजे से होना है। जिसमें आप सभी की उपस्थिति अपेक्षित है।

Nidhi

(प्रो० निधि श्रीवास्तव)

पर्यावरण संरक्षण एवं स्वच्छता समिति

PROF. NIDHI SRIVASTVA
COORDINATOR
Environment Conservation
&
Cleanliness Committee

Anoop

(प्रो० अनूप कुमार सिंह)

प्राचार्य
PRINCIPAL
PT. PRITHI NATH (P.G.) COLLEGE
KANPUR



P.P.N. (P.G.) College, Kanpur

96/12 Mahatma Gandhi Marg, Kanpur -208001

•Telefax: (0512)2361924 • Website: www.ppncollege.org •
•email: ppncollegekanpur@gmail.com •

Save Energy Initiative:

Save Energy campaigns are widely advertised on hoardings throughout our college campus, acting as visual cues to the community. By highlighting energy-saving techniques, these educational displays inspire staff and students to embrace sustainable lifestyles. There are lots of features, including advice on how to use appliances responsibly, light up spaces efficiently, and remember to turn off appliances. The hoardings also highlight the college's dedication to solar power and other green energy sources. This clear message encourages a group effort to lower energy consumption and develop a greener, more ecologically conscious collegiate atmosphere by increasing knowledge and establishing a sense of responsibility.



“Save Energy” placard in college campus



P.P.N. (P.G.) College, Kanpur

96/12 Mahatma Gandhi Marg, Kanpur - 208001

• Telefax: (0512)2361924 • Website: www.ppncollege.org •

• email: ppncollegekanpur@gmail.com •

Consistent efforts encourage energy efficiency. Benefits of renewable energy were highlighted at a recent workshop. Energy-saving techniques, such as effective lighting and insulation, were discussed by experts. Implementing these options was discussed by attendees. The conversation-starting interactive program encouraged community action for a sustainable future.



प० पृथी नाथ कालेज, कानपुर
Pt. Prithi Nath College, Kanpur

96/12, Mahatma Gandhi Marg, Kanpur

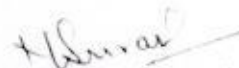
Telefax : 0512-2361924, Website-www.ppncollege.org/Email id : info@ppncollege.org, principal@ppncollege.org

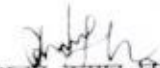
Ref. No./पत्रांक सं०.....

Date/दिनांक 15/04/2023

सूचना

समस्त छात्र-छात्राओं को सूचित किया जाता है विश्व भूमि दिवस के अवसर पर "KNOW YOUR DUSTBIN" पर कार्यशाला का आयोजन दिनांक 22.04.2023 को पी०पी०एन० महाविद्यालय के सभागार में सांय 02 बजे से किया जा रहा है। जिसमें आप सभी की सक्रिय भूमिका अपेक्षित है। अतः अधिक से अधिक संख्या में भाग लेकर अपना योगदान इस अभियान में करें।


(प्र० निधि श्रीवास्तव)
समन्वयक,
पर्यावरण संरक्षण एवं स्वच्छता समिति


(प्र० अनूप कुमार सिंह)
प्राचार्य
पी०पी०एन० कालेज, कानपुर



P.P.N. (P.G.) College, Kanpur

96/12 Mahatma Gandhi Marg, Kanpur -208001

•Telefax: (0512)2361924 • Website: www.ppncollege.org•

•email:ppncollegekanpur@gmail.com•

Management of the various types of degradable and non-degradable waste

Solid Waste Management:

Waste pollution is aesthetically ugly and produces a lot of rubbish. Hazardous waste, non-biodegradable waste, and biodegradable waste are the three categories for solid waste, which can lead to serious health issues. Food waste, waste from canteens, waste from restrooms, etc. are examples of biodegradable waste. Non-biodegradable garbage includes materials such as plastic, tin, glass, bottles, and so on. Hazardous waste, on the other hand, is waste that poses a risk to the environment's health and includes cleaning products and other chemicals used in laboratories. Every department of College generates waste and disposes of it in the department's tiny trash cans. When biodegradable garbage is composted on college campuses, it is successfully transformed into fertilizer.



Dustbin Placed in college campus



P.P.N. (P.G.) College, Kanpur

96/12 Mahatma Gandhi Marg, Kanpur -208001

• Telefax: (0512)2361924 • Website: www.ppncollege.org •

• email: ppncollegekanpur@gmail.com •

Bio-degradable Waste Management

E-Waste Management:

A very effective system is in place at college campus to get rid of e-waste produced from a variety of sources. The electronic garbage produced by science, computer, and administrative labs as well as academic institutions. Out-of-order and obsolete equipment, such as lab instruments, circuits, desktop, laptop, and accessory items, printers, charging and network cables, Wi-Fi devices, sound system, display unit, UPS, biometric machine, scientific instruments, etc., are included in the category of E-waste. All this equipment that is not recyclable or reusable is kept in storage until it is needed.



E-waste management in college campus

GST No. 09BLCPK1954K1ZV
Mob. 8826547301
Email: ykumar890@gmail.com

R-30



Bobby Enterprises and Work Contract

Date: 23 May 2023

CERTIFICATE

Bobby Enterprises and work contract, is thankful to the Principal and Faculty members of Pt. Prithi Nath (PG) College, 96/12 Mahatma Gandhi Marg, Kanpur -208001, for choosing our company for an environment friendly management of their e-waste.



Makkhanpur Firozabad 283145 (UP)



P.P.N. (P.G.) College, Kanpur ^{R-01}

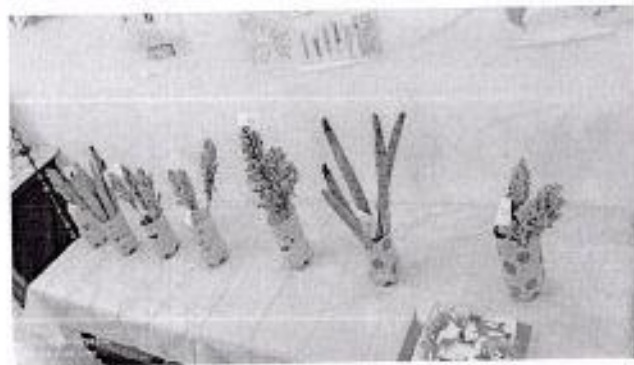
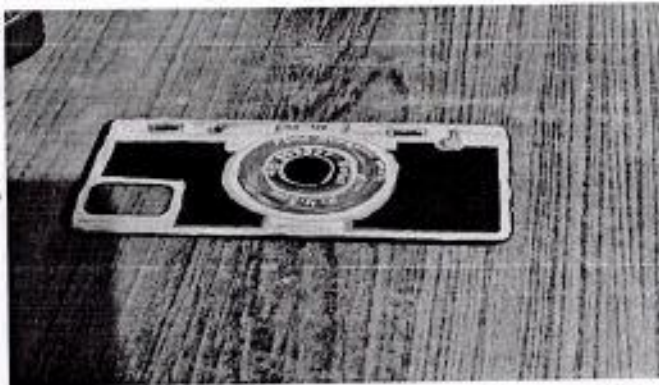
96/12 Mahatma Gandhi Marg, Kanpur -208001

• Telefax: (0512)2361924 • Website: www.ppncollege.org •

• email: ppncollegekanpur@gmail.com •

Reuse of Wastes:

Strong garbage reuse programs are in place on my college campus to promote sustainability. Electronics, paper, and plastics that are thrown away are sorted in a methodical manner and sent to reuse programs. The college actively encourages the use of recycled goods in everything from building materials to stationery. Composting organic waste is another initiative that produces nutrient-rich soil for landscaping. Students are urged to take part in upcycling projects, which turn trash into creative and useful objects. These programs not only lessen the college community's environmental impact but also foster a culture of resourcefulness and accountability, making the campus environment greener and more environmentally conscious.



Products made under 'Reuse of waste initiative'



P.P.N. (P.G.) College, Kanpur

96/12 Mahatma Gandhi Marg, Kanpur -208001

•Telefax: (0512)2361924 • Website: www.ppncollege.org•

•email:ppncollegekanpur@gmail.com•

R-12

Water conservation

Rain-water conservation:

Rainwater conservation efforts are essential to the sustainable management of water on our college campus. Rainwater collecting devices are positioned strategically on rooftops to collect and hold precipitation. After being collected, this rainwater is processed and used for a variety of non-potable uses, including landscaping, flushing, and irrigation. The campus runs workshops and educational programs to raise awareness of water conservation. Runoff is decreased via permeable pavements and green infrastructure, which also aid in groundwater recharging. These programs not only relieve the strain on nearby water supplies but also provide staff and students a sense of environmental responsibility. The college demonstrates its dedication to environmental stewardship and water sustainability through these actions.



Rainwater conservation pit in botanical garden of college



P.P.N. (P.G.) College, Kanpur

96/12 Mahatma Gandhi Marg, Kanpur -208001

•Telefax: (0512)2361924 • Website: www.ppncollege.org•

•email: ppncollegekanpur@gmail.com•

Green Campus Initiatives



Members of Environment Conservation and Cleanliness Committee



College students and teachers taking Oath to keep the environment clean



P.P.N. (P.G.) College, Kanpur

96/12 Mahatma Gandhi Marg, Kanpur - 208001

• Telefax: (0512)2361924 • Website: www.ppncollege.org •
• email:ppncollegekanpur@gmail.com •



प. पृथी नाथ (पी.जी.) महाविद्यालय, कानपुर PANDIT PRITHI NATH (P.G.) COLLEGE, KANPUR

96/12, Mahatma Gandhi Marg, Kanpur - 208 001

Telefax : 0512 - 2361924, Website : www.ppncollege.org • e-mail-id : ppncollegekanpur@gmail.com

Ref. No. _____

Dated 08/12/2022

आवश्यक सूचना

एन०एस०एस० के शमस्त स्वयंसेवकों को सूचित किया जाता है कि पर्यावरण संरक्षण के अन्तर्गत गो ग्रीन, यूज बाइसिकिल (Go Green, Use Bicycle) कार्यक्रम दिनांक 10/12/2022 को अपरान्ह 02:00 बजे से आयोजित होगा।

उक्त कार्यक्रम में सभी स्वयंसेवकों की उपस्थिति अनिवार्य है।

(प्रो अनूप कुमार सिंह)
प्राचार्य
PRINCIPAL
PT. PRITHI NATH (P.G.) COLLEGE
KANPUR

(डॉ० कृष्ण कुमार)
कार्यक्रम अधिकारी
राष्ट्रीय सेवा योजना
पी०पी०एन० कॉलेज, कानपुर।

Notification for Programme on "GO GREEN, USE BICYCLE"



P.P.N. (P.G.) College, Kanpur ^{R-15}

96/12 Mahatma Gandhi Marg, Kanpur -208001

•Telefax: (0512)2361924 • Website: www.ppncollege.org•

•email:ppncollegekanpur@gmail.com•

Use of Bicycle/ Battery Powered Vehicles:

Our college campus promotes environmentally friendly mobility by encouraging the use of bicycles and battery-powered cars. By encouraging employees and students to choose environmentally friendly ways to get to work and college, bike lanes and parking lots help cut down on carbon emissions. For short-distance transportation around campus, battery-powered vehicles—like electric scooters and carts—offer practical and environmentally friendly substitutes. Through awareness campaigns and use incentives, the college actively promotes these projects. By adopting these eco-friendly modes of transportation, the campus promotes a healthier and more sustainable way of living among its residents in addition to aiding in environmental conservation. The college launched a go green effort to address this issue and effectively raised awareness of the need of cycling among the public. Additionally, the college's cycle now has the Go Green logo thanks to the principal. Furthermore, what transpired concerned not just the college campus but also the college campus.



Principal sir pasting "Go Green" logo on bicycle on 10 December 2022



P.P.N. (P.G.) College, Kanpur^{R-16}

96/12 Mahatma Gandhi Marg, Kanpur -208001

• Telefax: (0512)2361924 • Mob.: 8707538344 •

• Website: www.ppncollege.org • • email:ppncollegekanpur@gmail.com

Date: 04/07/2022

NOTICE

All the Faculty Members, Non-teaching staff and the students of the college are informed that Plant Exchange Club, P.P.N.(PG) College, Kanpur is going to organise 'Plant Exchange Day' on 11th July,2022. All of you are requested to bring the plants which you wish to exchange with each other on the mentioned date.

(Mrs Alka Rani)

Head, Dept. of Botany

(Prof. Anoop Kumar Singh)

PRINCIPAL



P.P.N. (P.G.) College, Kanpur

96/12 Mahatma Gandhi Marg, Kanpur - 208001

• Telefax: (0512)2361924 • Website: www.ppncollege.org •
• email: ppncollegekanpur@gmail.com •

Plant Exchange Initiative by the Department of Botany

Department of Botany of our college launched a faculty-to-faculty plant exchange program in an effort to promote a green home. By encouraging teachers to swap and exchange different plants, the program promotes biodiversity and improves the campus environment. Faculty members trade plants with instructional value in addition to attractive ones, resulting in a dynamic and varied green area in their home spaces. This program fosters a sense of camaraderie among employees while simultaneously advancing environmentally conscious and sustainable practices. By means of the plant exchange, the college establishes a dynamic and living ecosystem that mirrors the dedication of its professors to more environmentally conscious home spaces, thereby influencing their neighbourhoods.



Plant Exchange among Faculties was organized in college campus on 11 July 2022



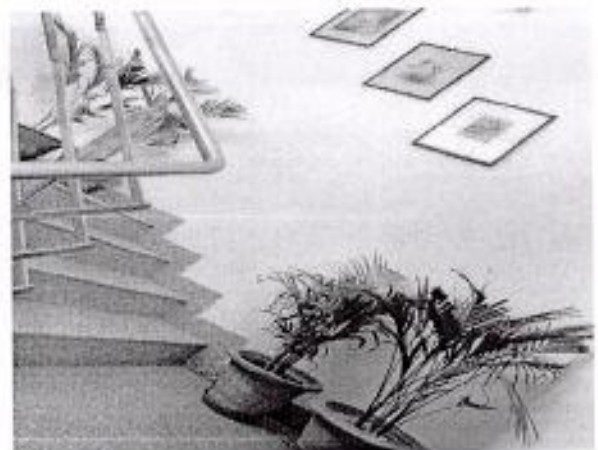
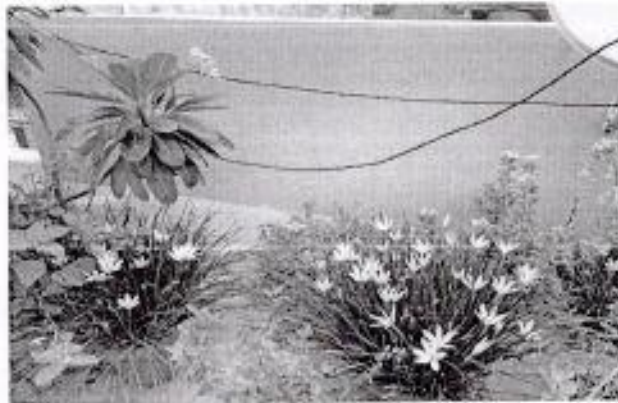


P.P.N. (P.G.) College, Kanpur

96/12 Mahatma Gandhi Marg, Kanpur -208001

•Telefax: (0512)2361924 • Website: www.ppncollege.org •
•email: ppncollegekanpur@gmail.com •

As part of the Plant Exchange project, professors exchange saplings that they then plant at their homes. This shows that we have an awareness of the environment that goes beyond only the college campus.



Plants at Professor's home



P.P.N. (P.G.) College, Kanpur

96/12 Mahatma Gandhi Marg, Kanpur -208001

•Telefax: (0512)2361924 • Website: www.ppncollege.org•
•email:ppncollegekanpur@gmail.com•

Pk.No- 0512/2361924



प० पृथी नाथ कालेज, कानपुर Pt. Prithi Nath College, Kanpur

96/12, Mahatma Gandhi Marg, Kanpur

Telefax- 0512-2361924 Website www.ppncollege.org/Email Id- info@ppncollege.org.principal@ppncollege.org

Ref. No./पत्रक सं०:.....

Date/दिनांक 30/09/2022

सूचना

समस्त छात्र-छात्राओं को सूचित किया जाता है विश्व मृदा दिवस के अवसर पर "प्लास्टिक निषेध परिसर" अभियान का आयोजन दिनांक 05.12.2022 को पी०पी०एन० महाविद्यालय के परिसर में सायं 02 बजे से किया जा रहा है। जिसमें आप सभी की सक्रिय भूमिका अपेक्षित है। अतः अधिक से अधिक संख्या में भाग लेकर अपना योगदान इस अभियान में करें।

(प्रो० निधि श्रीवास्तव)

पर्यावरण संरक्षण एवं स्वच्छता समिति

PROF. NIDHI SRIVASTVA
(CONVENOR)
Environment Conservation
Vidya
Cleanliness Committee

(प्रो० अनूप कुमार सिंह)

प्राचार्य
PRINCIPAL
PT. PRITHI NATH (P.G.) COLLEGE
KANPUR



P.P.N. (P.G.) College, Kanpur

96/12 Mahatma Gandhi Marg, Kanpur -208001

•Telefax: (0512)2361924 • Website: www.ppncollege.org•

•email: ppncollegekanpur@gmail.com•

R-20

Ban on Plastic use:

As part of our commitment to environmental stewardship, our college has instituted a complete ban on the use of plastics in campus. With this project, we hope to reduce plastic pollution and encourage staff and students to adopt sustainable practices. Reusable containers, bags, and water bottles are among the alternatives that are strongly recommended. Appropriate recycling bins also help with appropriate garbage disposal. Campaigns to raise awareness, highlight the harm that plastic does to the environment and encourage a campus-wide commitment for being plastic-free. By taking such a significant step, the college not only promotes environmental health but also fosters a conscientious and accountable community committed to lessen its environmental impact.



P.P.N. (P.G.) College, Kanpur ^{R-21}

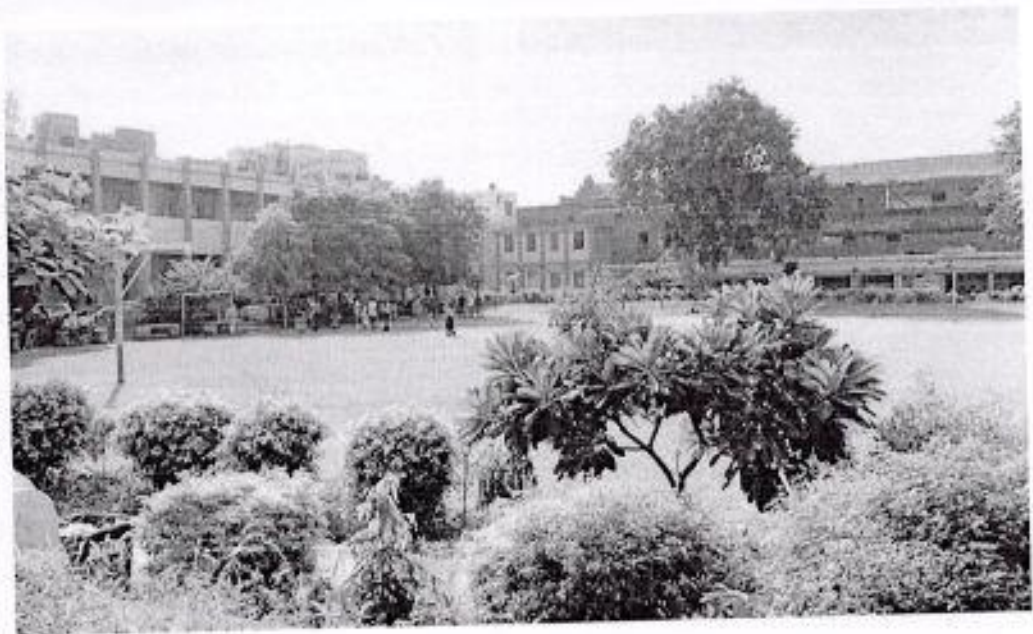
96/12 Mahatma Gandhi Marg, Kanpur -208001

• Telefax: (0512)2361924 • Website: www.ppncollege.org •

• email: ppncollegekanpur@gmail.com •

Landscaping with trees and plants:

The intentional placement of trees and other plants is emphasized in the lush, ecological landscaping on our college campus. Carefully selected native species support ecological balance and biodiversity in addition to improving the area's aesthetic appeal. For both staff and students, green spaces offer a peaceful setting that promotes wellbeing and a sense of connection to the natural world. The campus landscaping design incorporates areas with shade for study and relaxation, resulting in a well-balanced combination of academic spaces and natural elements. Water use in landscaping is reduced by using sustainable techniques like xeriscaping and rain gardens. Our college fosters a welcoming and environmentally responsible campus that positively impacts people and the environment through its dedication to green spaces.



College Ground



P.P.N. (P.G.) College, Kanpur

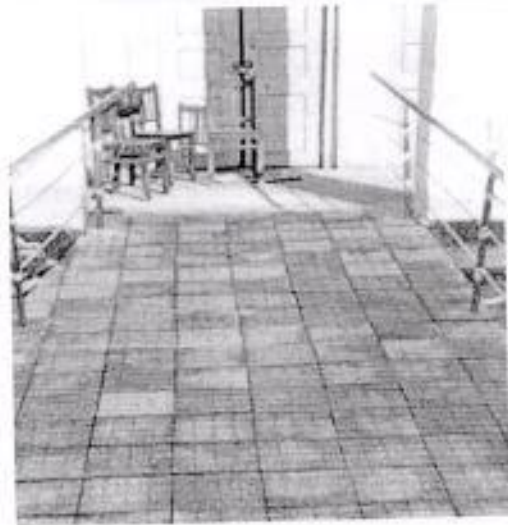
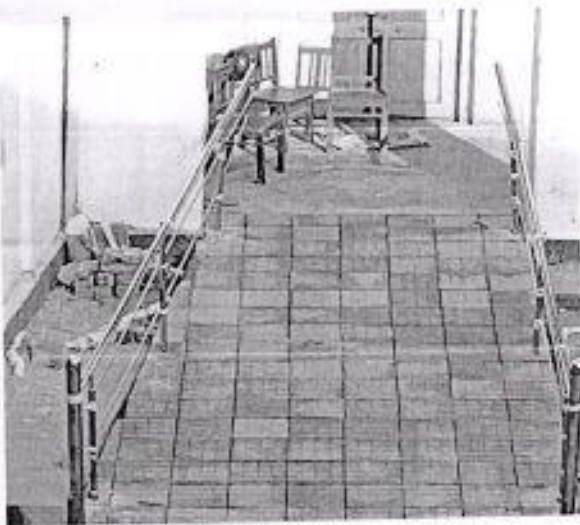
96/12 Mahatma Gandhi Marg, Kanpur -208001

•Telefax: (0512)2361924 • Website: www.ppncollege.org•
•email: ppncollegekanpur@gmail.com•

Disabled-Friendly Environment

Ramps:

Having ramps accessible to people with disabilities is essential to promoting accessibility and inclusivity. These buildings act as vital passageways, guaranteeing that those with mobility impairments can move freely across public areas. By building ramps, society encourages inclusivity and recognizes the value of equal possibilities. Ramp accessibility goes beyond simple practicality to empower those with impairments, promoting a sense of respect and autonomy. It's a concrete step toward dismantling physical barriers, encouraging social integration, and building a society in which everyone may fully engage in all facets of life, regardless of physical ability.



Ramp in college campus



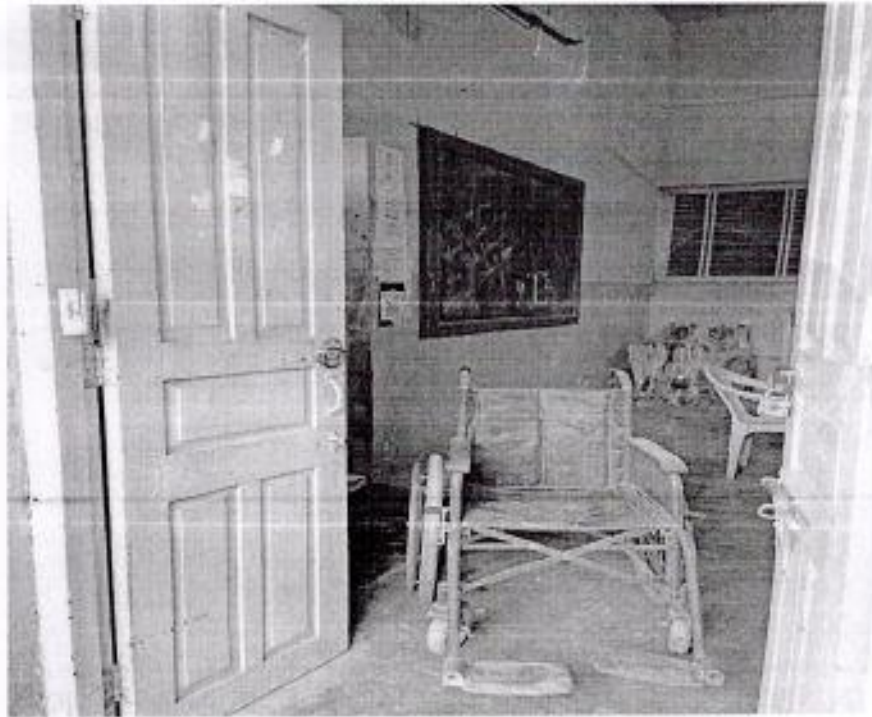
P.P.N. (P.G.) College, Kanpur^{R-23}

96/12 Mahatma Gandhi Marg, Kanpur -208001

• Telefax: (0512)2361924 • Website: www.ppncollege.org •
• email: ppncollegekanpur@gmail.com •

Wheelchairs:

To foster an inclusive learning environment, my college's campus is equipped with wheelchair accessibility. Accessible walkways and ramps are essential components of wheelchair-friendly infrastructure that help students with mobility issues move about campus freely. Wheelchair users' overall college experience is improved by this commitment to inclusivity, which also represents the institution's commitment to diversity and equitable access to education. Accessibility for wheelchair users in classrooms, libraries, and leisure spaces fosters a feeling of community and enables students with mobility limitations to fully engage in social and academic activities. It's a concrete example of the college's dedication to establishing a friendly and fair learning environment for everybody.



Wheelchair in common room



P.P.N. (P.G.) College, Kanpur

96/12 Mahatma Gandhi Marg, Kanpur -208001

•Telefax: (0512)2361924 • Website: www.ppncollege.org •
•email: ppncollegekanpur@gmail.com •

R-24

Differently Abled Friendly Restroom:

The establishment of "Differently Abled Friendly Restrooms" in my college campus is a crucial step towards fostering inclusivity and ensuring the comfort and dignity of individuals with diverse abilities. These restrooms are equipped with features such as spacious layouts, grab bars, and accessible facilities, catering to the unique needs of differently abled individuals. By incorporating such amenities, the college not only adheres to accessibility standards but also communicates a commitment to creating an environment where everyone, regardless of physical ability, can navigate and utilize facilities with ease. This initiative contributes to a more inclusive and supportive campus culture, promoting equality and equal access for all students and staff.





P.P.N. (P.G.) College, Kanpur

96/12 Mahatma Gandhi Marg, Kanpur -208001

• Telefax: (0512)2361924 • Website: www.ppncollege.org •
• email:ppncollegekanpur@gmail.com •

R225

Visually challenged friendly website and Accessible signage for visually impaired:

The main goal of our college website is to ensure that visually challenged people may utilize it with ease. We make sure that everyone can view the material clearly by giving users the ability to change the colours and display settings. Additionally, our college website is made to be compatible with screen readers, provides easy-to-use layouts for anyone with vision impairments to navigate with the aid of these characteristics, a friendly online environment and equal access to content are made possible for all students. Some signage that are useful for visually challenged students are available in college campus.

